

## WOOD PANEL LED KIT

All Wood panel LED kits come complete with black aluminum rails with a full-length black-matted cover, LED strip in either 3,000 or 4,000 kelvin / warm or cold white depending on order, driver and necessary mounting parts.

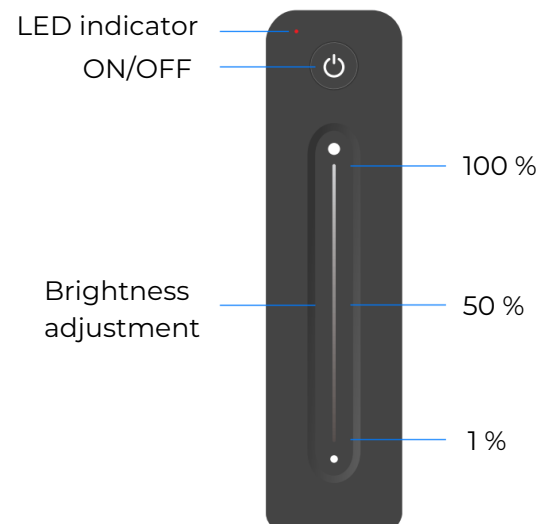
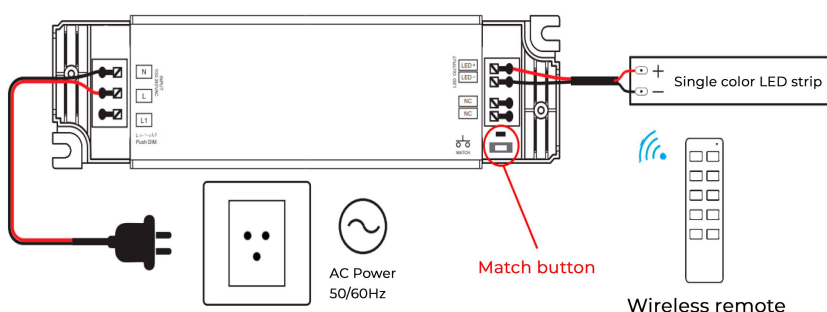
1. Attach the black aluminum rails to your wood panel via the included screws.
2. Unroll the LED strip and attach it to the aluminum rails as desired using the tape on the back of the strip. If necessary, cut excess LED strip off at the nearest cut line.
3. Place the supplied endpiece at the end of the aluminum rail where the LED strip's wire is.
4. Take the black matte plastic cover and click it onto the rails.
5. Insert the cable from the LED strip into the included driver. If you bought a kit with multiple LED strips, put the wires from the LED strips into the supplied splitter box.
6. Connect the LED strip to the driver and plug the 230V power cord into the socket. If there are several LED rails, the driver is connected to the supplied junction box.

## THE CONTENT OF THE PACKAGE

- |   |                            |   |  |
|---|----------------------------|---|--|
| 1 | Black aluminum rails       | 4 | Driver 230V  |
| 2 | Black-matted plastic cover | 5 | Remote OR touch-dimmer switch (additional purchase)  |
| 3 | LED strip                  | 6 | Mounting screws, end piece and foam blocks for if you choose to shorten the LED strip in the rail (can be shortened every 5 cm. by the cutting line) |

## REMOTE CONTROL PAIRING

Open up the shielding of the driver on the LED side and press the black "Match" button and then immediately the "ON" button on the remote control. When the remote control's LED diode lights up steadily, it is ready for use. If it is desired to use PUSH dimming via a switch, it must be set up based on the drawing on the next page.



## SETUP (NOTE: THE IMAGES ARE PURELY ILLUSTRATIVE)

### WOOD PANEL LED KIT WITH 1X LED STRIP

From the driver, a 230V cable goes out one end that has to be plugged into the socket, out the other end a male DC plug goes out that must be plugged into the female plug on the LED strip. If you have purchased a kit with a touch dimmer, the dimmer must be placed between the driver and the LED strip.

#### Installation WITHOUT touch-dimmer



#### Installation WITH touch-dimmer

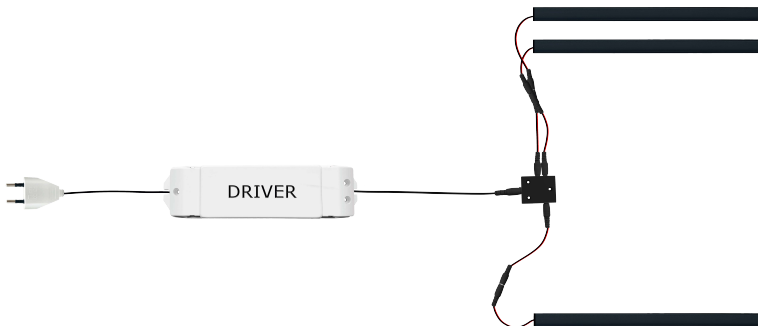


### WOOD PANEL LED KITS WITH 2X LED STRIP OR MORE (MAX UP TO 3 LED STRIPS)

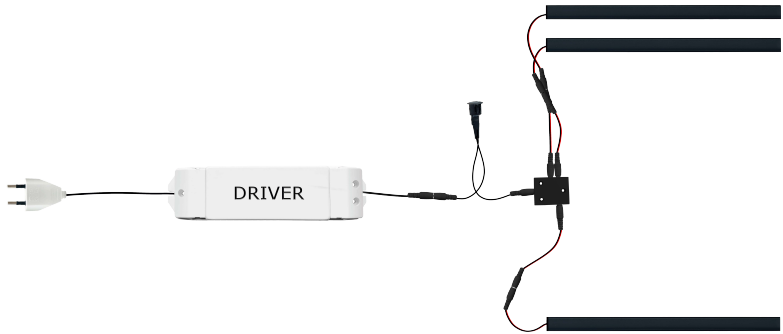
From the driver, a 230V cable goes out, which must be plugged into the socket. Out the other end, a male DC plug goes out that must be plugged in to the supplied distributor box, which has 4+1 female inputs.

Plug the male DC connector from the driver into the middle female connector at the end of the distributor box, and the male-male extension cables from the LED strips into one of the four available female DC connectors on the sides of the distributor box. If you have purchased a kit with a touch dimmer, then the dimmer must be placed between the driver and the distributor box.

#### Installation WITHOUT touch-dimmer



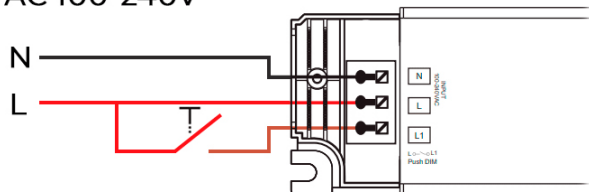
#### Installation WITH touch-dimmer



### PUSH SETUP

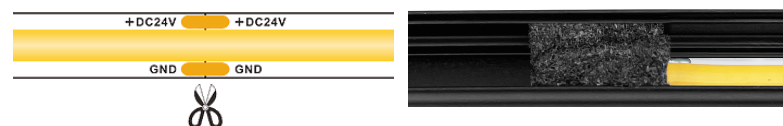
Please see the drawing below for setting up the PUSH function (dimming via push switch).

AC 100-240V



### HOW TO SHORTEN THE LED STRIP

The LED strip can be shortened every 5 cm. at the cutting lines for a different look if desired. Use one of the included foam blocks for a nicer finish without excess light going up the rail. The foam block can be cut as desired.



### Touch-dimmer installation

Please scan the QR code to view the installation video on YouTube

