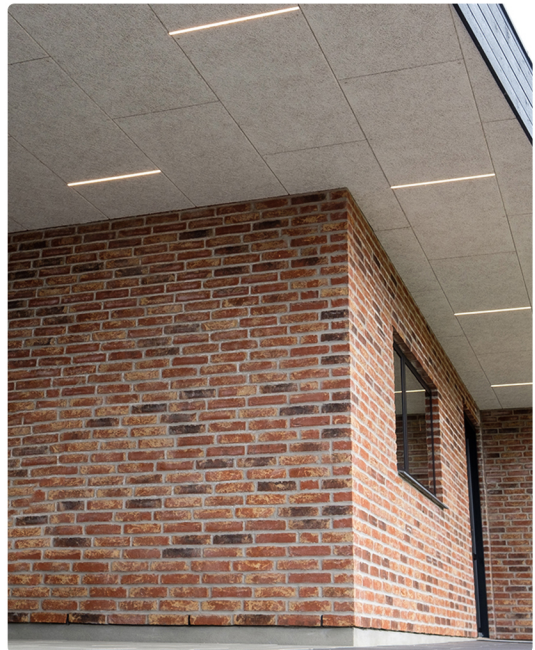


green:ID

LED LIGHT RAILS SPECIALLY DESIGNED FOR TROLDTEKT®





SPECIALLY DESIGNED

green:ID LED light rails are a specially designed lighting concept developed specifically for Troldekt ceilings.

STYLISH

The light rails add a stylish, minimalist look along with excellent and flexible lighting.



DISCREET INSTALLATION

The light rails are elegantly integrated into the joints between the Troldekt panels.

This form of installation avoids breaking the surface of the ceiling panels.

TWO VERSIONS, MULTIPLE VARIANTS

The concept is based on a flush-mounted and a semi-recessed version, both available in 60 cm and 120 cm lengths, as well as in several different variants.

Flush-mounted

This version is designed for discreet installation where the light rail is flush with the surface of the ceiling panel. This provides a discreet and integrated lighting solution, where the light rail blends beautifully into the ceiling surface.

Semi-recessed

This version is mounted so that the light rail is just below the ceiling panel, but still tight against the ceiling without any visible gap. This solution gives a more defined light boundary and keeps the ceiling intact.



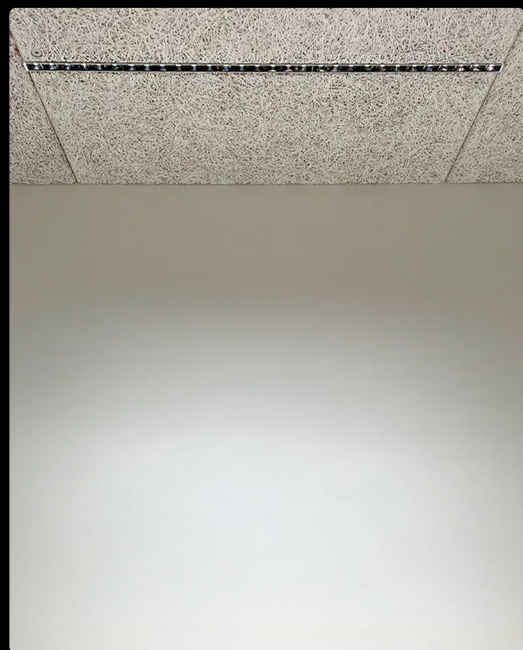
LOW GLARE VERSION

The green:ID UGR light rail is the latest version of our popular LED rails.

It is developed with specially designed reflectors that ensure glare-free lighting.

The rails are flush-mounted and available in lengths of 60 cm and 120 cm, as well as in two heights to fit ceiling panels of 25 mm and 35 mm.

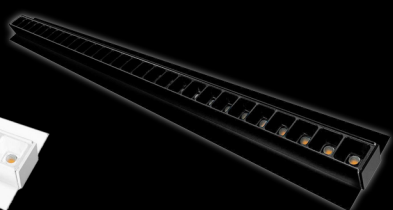
The UGR light rails are available in multiple color combinations and variants.



White/Black
Glare: UGR<16



White/White
Glare: UGR<19



Black/Black
Glare: UGR<16

✓ ALL DIMMING FORMATS

✓ SPECIALLY DESIGNED REFLECTORS

✓ MULTIPLE VARIANTS



FLEXIBLE LIGHTING

green:ID LED light rails for Trolldtekt ceilings are created for maximum flexibility. The LED light rails are available with several different light characteristics and support all common dimming and control formats.

The concept is distributed by ECOFOSS.

UGR



CRI>90



CCT



D2W



RGB



DALI



TRIAC



1-10V



WiFi



ON/OFF



 **zigbee**

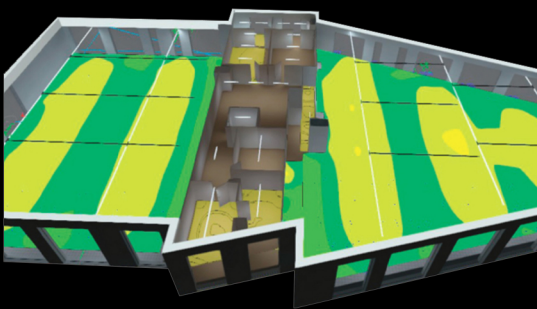
CASAMBI

Shelly®

hue

LIGHT CALCULATIONS

ECOFOSS offers DIALux lighting calculations as part of project planning.



www.ecofoss.dk

ECOFOSS | Tlf.: +45 7060 6560 | info@ecofoss.dk